



Realising the Star Within

UNDERSTANDING & SUPPORTING YOUR CHILD'S TRANSITION TO SECONDARY SCHOOL

MDM DONNA CHANG, ASSISTANT YEAR HEAD 1

OVERVIEW OF SHARING

1.	Differences Between Primary and Secondary School
2.	More / New Subjects in Secondary 1
3.	Personalised Digital Learning Programme
4.	Tips to Support Your Child Through the Transition
5.	School-Home Partnership
6.	Different Information Channels

Any questions?

Go to [slido.com](https://www.slido.com) and key in code #2091364

DIFFERENCES BETWEEN PRIMARY & SECONDARY SCHOOL



- More / new subjects, programmes and activities
- Longer curriculum hours
- Enhanced integration of ICT in the curriculum
 - Regular Home-Based Learning (HBL) Days (generally once a fortnight)
- CCA is compulsory
- Greater peer influence
- Greater independence and expectations of self-discipline and self-responsibility

Any questions?

Go to [slido.com](https://www.slido.com) and key in code #2091364

MORE / NEW SUBJECTS IN SECONDARY 1

Examinable Subjects

- English Language
- Mother Tongue Language
- Mathematics
- General Science
- History (G2 &G3 only)
- Geography (G2 & G3 only)
- English Literature (G2 & G3 only)
- Art
- *Design & Technology
- *Food & Consumer Education

**Will be taken in either semester 1 or 2*

Non-Examinable Subjects

- Music
- Physical Education (PE)
- Character & Citizenship Education (CCE)
- Applied Learning Programme (ALP)
- G1 Humanities
(Social Studies & Humanities Exposure Modules – History, Geography, English Literature)



Realising the Star Within

Any questions?

Go to [slido.com](https://www.slido.com) and key in code #2091364

PERSONALISED DIGITAL LEARNING PROGRAMME

As shared at the Sec 1 Briefing day, the PDLP aims to:

- support the development of digital literacy
- support self-directed and collaborative learning
- enhance teaching and learning in school and at home

PERSONALISED DIGITAL LEARNING PROGRAMME



Compassvale's PDLP Parents'
Microsite: [https://go.gov.sg/cvss-sec1-
pld](https://go.gov.sg/cvss-sec1-pld)

- A letter to parents will be issued via Parents Gateway on 15 January 2024 (Monday)
- Parents would need to reply via FormSG link by 19 January 2024
- Cash payment for Permanent Residents and International Students or for Singapore Citizens who opt to pay by cash must be made in full by 2 February 2024 (Friday)



Realising the Star Within

Any questions?
Go to [slido.com](https://www.slido.com) and key in code #2091364

Compassvale Secondary School

PERSONALISED DIGITAL LEARNING PROGRAMME

Supporting Students in the Safe and Effective Use of the Devices

- The school has measures in place to enable a safer digital environment for learning with the use of P.Ds. This includes:

- Classroom management and routines
- Educating students on Cyber Wellness
- Device Management Application (DMA) to set helpful limits in managing



Any questions?

Go to [slido.com](https://www.slido.com) and key in code #2091364

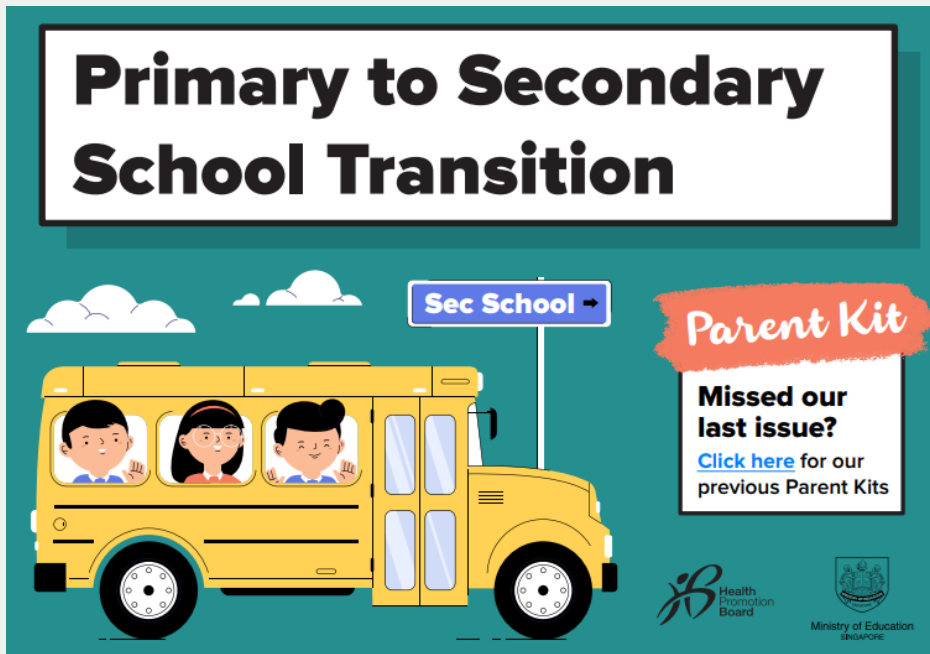
PERSONALISED DIGITAL LEARNING PROGRAMME



- We would like to partner parents/guardians to ensure that students are well supported in their use of technology for learning.
- As parents/guardians, you can help in the following ways:

Model	Model positive digital habits for your child / ward e.g. not using devices during family meals
Know	Know your child / ward well, and have conversations with him / her about safe and responsible use of technology
Set	Set ground rules for internet / device usage
Guide	Guide your child / ward to use productivity tools using his / her PLD, to organise information and simplify tasks for efficiency.

TIPS TO SUPPORT YOUR CHILD THROUGH THE TRANSITION



Scan the QR code to read up:



Parent Kit: <https://go.gov.sg/moe-primary-to-secondary-transition>

Parenting with MOE Instagram: [@parentingwith.moesg](#)



Realising the Star Within

Any questions?
Go to [slido.com](https://www.slido.com) and key in code #2091364

Compassvale Secondary School

SCHOOL-HOME PARTNERSHIP

- Check Parents Gateway regularly for updates & respond to them
- **Parents Gateway app should not be installed on your child's phone** - they do not have the wisdom or maturity to give consent for themselves yet
- Communicate & collaborate with your child's teachers to help your child learn and grow into adolescence
 - Email them directly or contact them via General Office Tel:
6881 5047
 - Attend Parent-Teacher Conference:
24 May 2024, Friday (last day of Term 2)
- Join the Parent Support Group (PSG)
 - Network with other parents, attend parenting workshops and activities

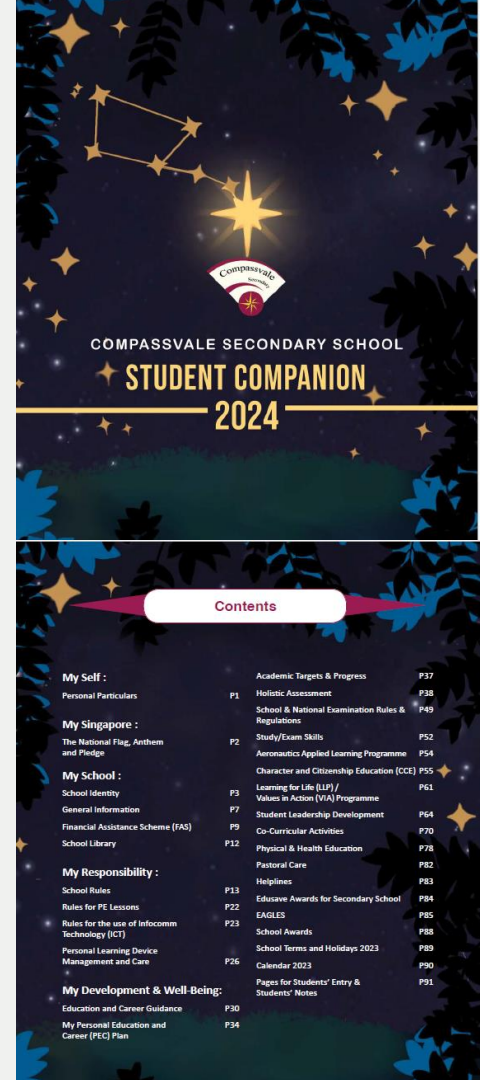
Any questions?

Go to [slido.com](https://www.slido.com) and key in code #2091364

DIFFERENT INFORMATION CHANNELS

- School website:
<https://compassvalesec.moe.edu.sg>
- School social media pages:
www.fb.com/cvssfacebook
www.instagram.com/compassvalesecsch
- Student Companion
- School's Termly letter to parents
- Parents Gateway notifications

Any questions?
Go to [slido.com](https://www.slido.com) and key in code #2091364



Together, we can help every child find their compass in life and realise the STAR within





Realising the Star Within

ASSESSMENT AND PROGRESSION



Realising the Star Within

1

LANGUAGES, LITERATURE AND HUMANITIES

- Confident communicator
- Cross-cultural and globally aware
- Active citizenship

2

SCIENCE, TECHNOLOGY, ENGINEERING AND MATHEMATICS [STEM X SUSTAINABILITY]

- Creative and human-centred problem solver
- Technologically literate

3

VISUAL AND PERFORMING ARTS

- Appreciation of the Arts
- Artistic and creative expression

4

PHYSICAL EDUCATION AND SPORTS NUTRITION

- Physical well-being
- Resilience
- Informed lifestyle habits and routines

5

LEADERSHIP AND SERVICE

- Service leadership practices
- Commitment and service to others
- Positive difference

6

CHARACTER, LIFESKILLS AND PASSION DEVELOPMENT

- Values inculcation
- Character development and self-management
- Strengths and passion development
- Digital and Media Literacy

THE COMPASSVALE EXPERIENCE – 6 INTEGRATED COMPETENCY & DEVELOPMENT CLUSTERS

SCHOOL-BASED ASSESSMENT

Term 1 WA	Term 2 WA	Term 3 WA	Term 4 End-of-Year Exam
10-15% (W6-10)	15% (W5-10)	15% (W6-8)	55-60% (W3-5)

**Excludes D&T & FCE which are offered on a semester basis.*

Subject teachers will inform the students on the dates, scope and format of the assessment.

PROGRESSION TO SEC 2

[Before 2024]

~~Promotion Criteria
for Sec 1~~

~~Lateral Transfer~~



[From 2024]

All students generally
progress to Sec 2.

Students who do well may
offer subjects at **More
Demanding Level (MDL)**.

Any questions?

Go to [slido.com](https://www.slido.com) and key in code #2091364

OFFER OF SUBJECTS AT MDL

At the end of Sec 1, students who have done well can adjust their subject levels.

Eligibility criteria to offer **English Language, Mathematics, Science and/or Mother Tongue Languages** at MDL from Sec 2:

Current subject level	School-based results	Option to offer subject at
G1	≥75% in the specific subject	G2 starting from next semester
G2	≥75% in the specific subject	G3 starting from next semester

OFFER OF SUBJECTS AT MDL

Eligibility criteria to offer **Humanities (Geography, History, Literature)** at MDL at Sec 2:

Current subject level	School-based results	Option to offer subject at
G1	<p>≥ 75% overall in G1 English Lang (or ≥50% overall in G2 English Lang)</p> <p>&</p> <p>A Pass with Distinction grade for both G1 Humanities (Social Studies component) Performance Tasks in Sem 1 and 2</p>	G2
G2	75% or higher in specific subject	G3

WHAT'S NEXT?

Sec 1 & 2

End of Sec 2

Sec 3 & 4

Deciding on upper secondary subject combinations

All students will offer between 5 and 9 examinable subjects for upper secondary.

Upper secondary

Students will continue to have flexibility to offer subjects at different subject levels, including elective subjects (e.g. Additional Mathematics, Art, D&T, NFS, Full Geography/History).

Any questions?

Go to [slido.com](https://www.slido.com) and key in code #2091364

WHAT'S NEXT?

End of Sec 4/5

Singapore-Cambridge Secondary Education Certificate (SEC) Examination

From 2027, students will sit for the new SEC examinations, with different papers for each subject level.

5th year of secondary education will continue to be available for eligible students.

- This allows them to pace their learning and possibly offer subjects at a more demanding level to access more post-secondary pathways.

Post-Secondary

Admission to post-secondary education institutes

Admission criteria have been progressively updated to recognise students taking different combinations of subjects and subject levels.

- E.g., Polytechnic Foundation Programme (PFP) has been expanded to allow access to students offering G3 subjects, or a mix of G2 and G3 subjects.

Any questions?

Go to [slido.com](https://www.slido.com) and key in code #2091364

HOW CAN YOU SUPPORT YOUR CHILD?

- **Learn more about their strengths, skills, interests, learning styles and aspirations.**
- **Encourage your child to be open and think about possible education and career opportunities.** There are many post-secondary education options for students to explore. Find one that best suit their strengths, skills, interests and learning styles.



Realising the Star Within

CCA SELECTION AND ALLOCATION

CATEGORIES OF CCA

Sports	Performing Arts	Uniformed Groups	Clubs & Societies
Badminton	Band	Boys' Brigade	Aeronautics
Basketball	Choir	Girl Guides	Community Youth Leaders
Floorball	Dance	NCC (Air)	Environmental Science
Netball	Drama	NPCC	Library
Softball		Red Cross Youth	PA/AVA & Videography
			Robotics



CCA OPEN HOUSE

- **12 Jan, 2.00 – 4.00 p.m.**
- **To provide students first-hand information about each CCA from CCA Teachers i/c and CCA leaders**



Realising the Star Within

Any questions?
Go to [slido.com](https://www.slido.com) and key in code #2091364

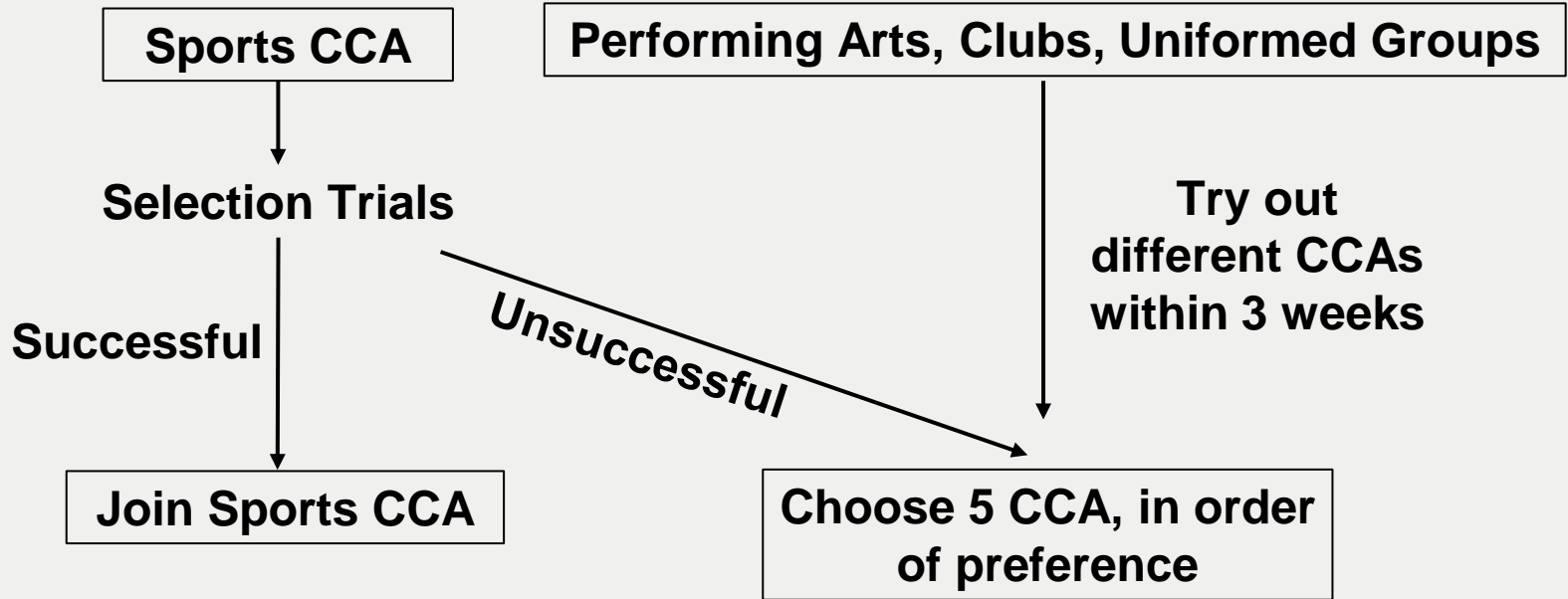
Compassvale Secondary School

CCA SELECTION AND ALLOCATION

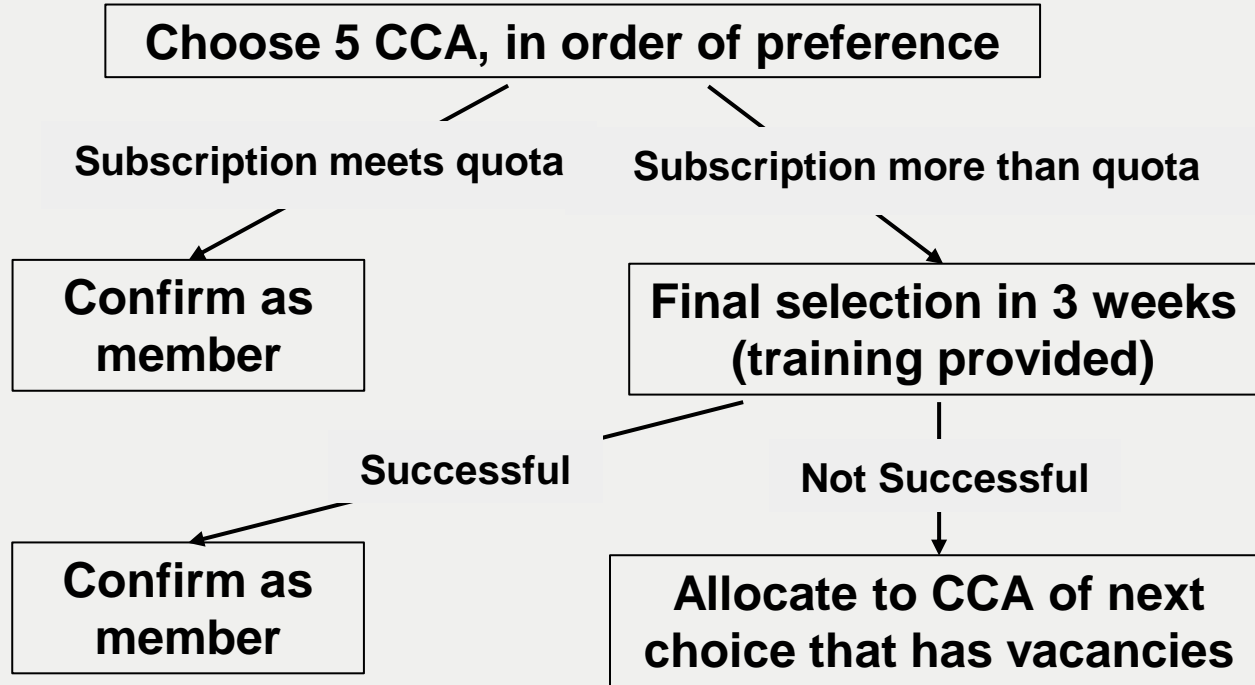
- **Sports – selection trial**
- **UG, Performing Arts & Clubs & Societies – try-out**
- **Submit CCA choices (5) via online – refer to handout given to students.**



CCA SELECTION AND ALLOCATION FLOW-CHART



CCA SELECTION AND ALLOCATION FLOW-CHART



REQUEST FOR CHANGE OF CCA

- **Students should remain in their chosen CCA for the 4 to 5 years in Compassvale**
- **Change of CCA is assessed on a case-by-case basis and supported by valid reasons + availability of vacancies**
- **Approach CCA Teachers i/c for advice and HOD/PE & CCA for approval for such requests**

POLICY & EXPECTATIONS

- **All students must participate in at least one CCA**
- **Not advisable to have more than one CCA unless students can cope with the demand**
- **Attendance for CCA is compulsory. Absence without valid reasons will be treated as truancy**



CCA RECOGNITION SYSTEM - LEAPS 2.0

4 domains and each domain has five levels of attainment

Participation

Achievement

Leadership

Service



LEAPS 2.0

At the end of 4/5 years in school, students' CCA attainment will be converted as bonus point(s) for admission to JCs / Polytechnics and ITE.

Co-Curricular Experience	Bonus Points
Excellent	2
Good	1
Fair	0



**More details on CCA in
Student Companion, pp. 62-68**

Thank you!



Realising the Star Within

**Any questions?
Go to [slido.com](https://www.slido.com) and key in code #2091364**

Compassvale Secondary School