

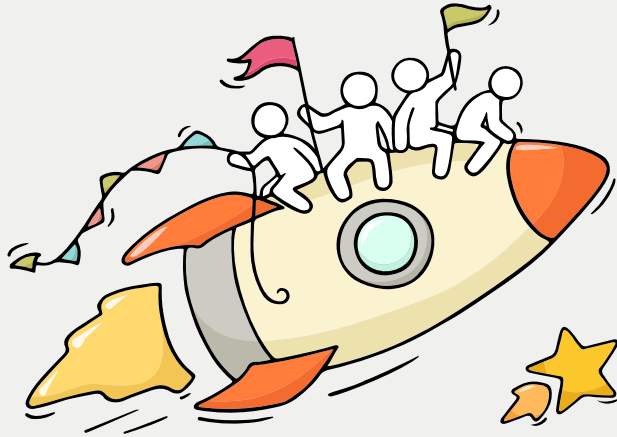
Welcome Back!

Release of 2025 N-Level Results



Dear North Stars,

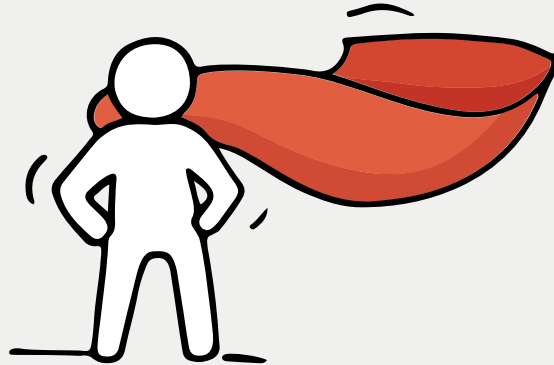
You have worked hard to reach this stage. Let's celebrate your efforts!



*Finally, we are going
to get our results!*



Remember that while **everyone's educational journey is different,**
we can each have a fulfilling outcome!



CONCERNED ABOUT YOUR NEXT STEPS?

When you receive your results, you may experience a range of emotions.

Managing these emotions well will allow you to stay calm and make rational decisions.

Stop

- Calm yourself down. Take a few deep breaths.

Think

- Think through the different options that are available for you. Keep things in perspective.
- Remember that the N-Level is one part of your life journey and not the destination.

Do

- Approach a trusted adult and seek his/her help. Have a conversation with this person about what would be best for you.
- Make a decision and take action based on your options.

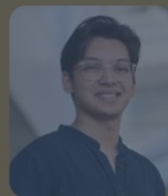
POST-SECONDARY EDUCATION PATHWAYS FOR N-LEVEL STUDENTS [N(T) COURSE]

Eligibility 3 Yr Higher Nitec:

- meet minimum entry requirements (MERs)

**Refer to the ITE Course
Booklet for more info.**

ITE PROGRAMMES



52
2-Year
Higher
Nitec



49
3-Year
Higher
Nitec

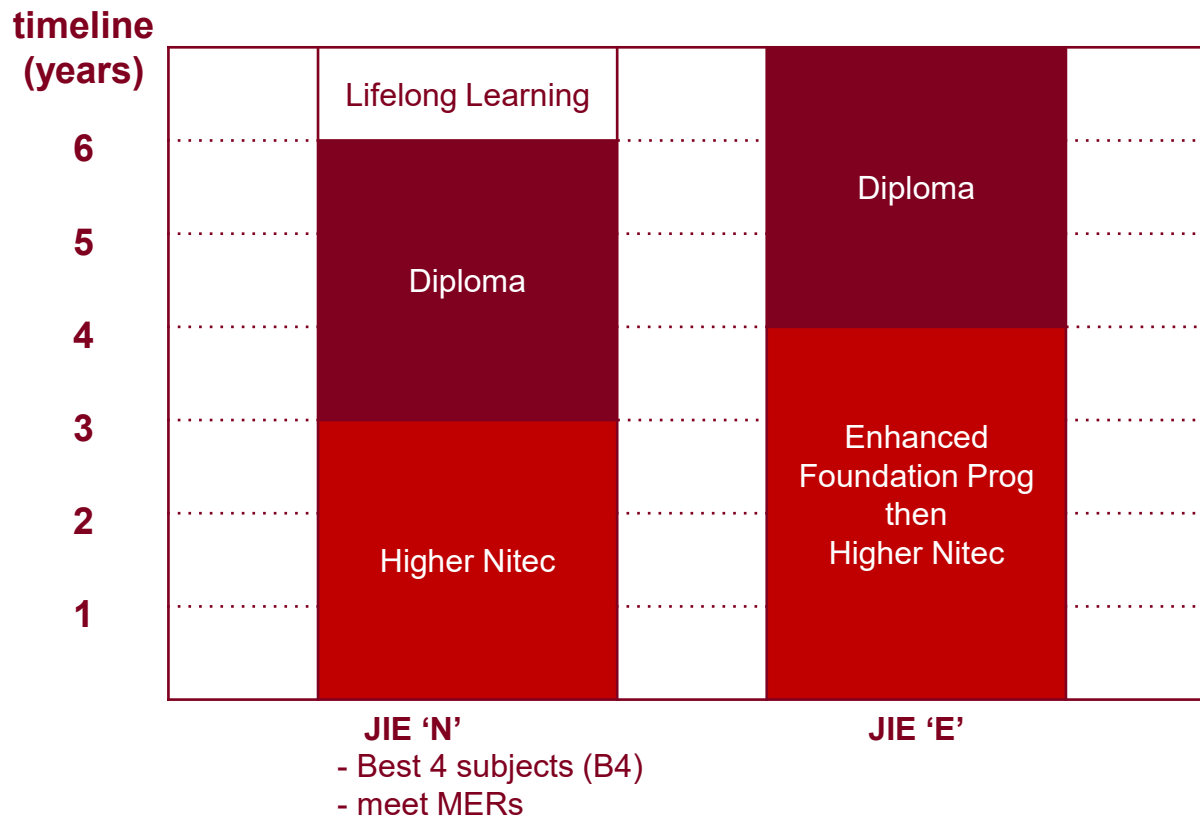


8
Technical
Diploma



45
Work-
Study
Diploma

POST-SECONDARY EDUCATION PATHWAYS FOR N-LEVEL STUDENTS [N(T) COURSE]



*progression is based on merit and good performance in selected courses

MER: course-specific Minimum Entry Requirements

POST-SECONDARY EDUCATION PATHWAYS FOR N-LEVEL STUDENTS [N(A) COURSE]

Eligibility for **Polytechnic Foundation Programme (PFP)***:

- $\text{ELMAB3} \leq 12$ excluding CCA bonus points, and
- meet minimum entry requirements (MERs)

Eligibility for **Direct Entry Scheme to Polytechnic Programme (DPP)**:

- $\text{ELMAB3} \leq 19$ excluding CCA bonus points, and
- meet minimum entry requirements (MERs)

Eligibility for **Sec 5 (O-level)**:

- $\text{ELMAB3} \leq 19$ excluding CCA bonus points
- obtain Grade 5 or better for all subjects used in ELMAB3 computation

Eligibility for **3 Yr Higher Nitec**:

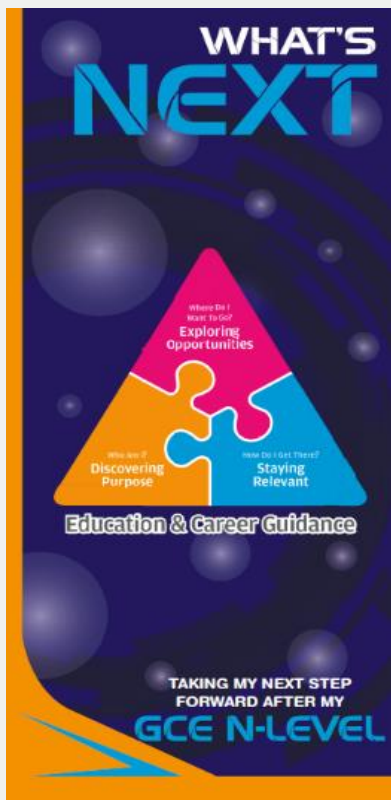
- meet minimum entry requirements (MERs)

Note:

**Eligibility for PFP may change after
O-level results release*

**PFP applicants are required to
return to CVSS for lesson till end-Jan*

RESOURCES TO HELP YOU MAKE INFORMED DECISIONS



PLANNING YOUR NEXT STEP

These resources will help you chart your path ahead:



• What's Next Brochure
<https://go.gov.sg/whats-next-nlevel>



• Contact the ECG Centre @ MOE
<https://go.gov.sg/moe-ecg-centre>



• MySkillsFuture Student Portal
<https://go.gov.sg/MySFSec>



• Chat with your school's
ECG Counsellor



MySkillsFuture Student Portal

Use the information and tools to explore various education and career pathways and take charge of your future.

RESOURCES TO HELP YOU MAKE INFORMED DECISIONS

You can find the details of the various admissions exercises in the **Post-Secondary Admissions Exercises booklet** that can be downloaded from:

<https://www.moe.gov.sg/post-secondary/admissions>

- Direct-Entry-Scheme to Polytechnic Programme (DPP)
- Polytechnic Foundation Programme (PFP)
- Joint Intake Exercise (JIE) 'N' / 'E'
- NAFA Foundation Programme (NFP)



RESOURCES TO HELP YOU MAKE INFORMED DECISIONS

Post-Secondary Education

Learn more about the
post-secondary education institutions



<https://moe.gov.sg/post-secondary/overview>

REACHING OUT FOR SUPPORT IS A SIGN OF STRENGTH

If you have questions about your options or are not coping well, you can reach out to trusted adults such as a parent/guardian, teacher, School Counsellor or ECG Counsellor. You can also talk to a trusted friend.



Make an appointment to speak with your ECG Counsellor in school

OR

Make an ECG counselling appointment via the ECG Centre @ MOE

<https://go.gov.sg/moe-ecg-centre>





Education and Career Guidance



01



Feeling uncertain or anxious about your future and career aspirations?

Difficulty in deciding your subject combination or post secondary pathway?



03

Let's Chat!

Every Monday and Wednesday

Email:

bhavani_devi_thangamani_A@schools.gov.sg

Booking link: <https://go.gov.sg/cvssecgchat>

Venue: ECGC Room, B1-14

02

Ms Bhavani is here to support



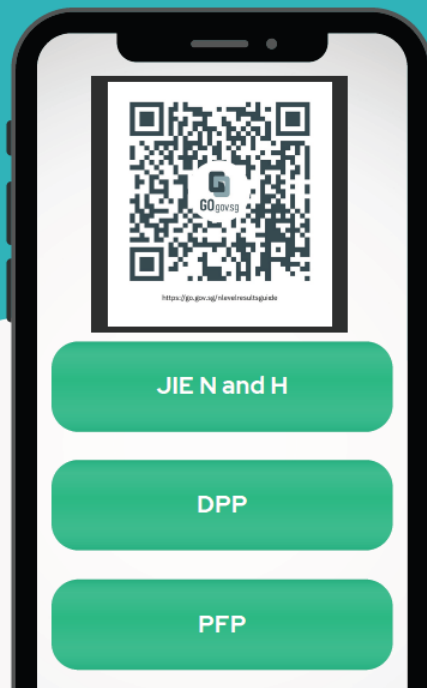
"Hi everyone, I'm Ms. Bhavani, your Education and Career Guidance Counsellor. My role is to help you explore your interests, discover your strengths, and navigate the exciting journey of choosing your future path. Whether you're dreaming big or unsure of what's next, I'm here to guide you with insights, resources, and support. Let's work together to turn your ambitions into a plan and your potential into success!"



Scan the QR code to book your ECGC session.

N level Results and Application Guide

Scan the QR code for
instructions on Padlet.



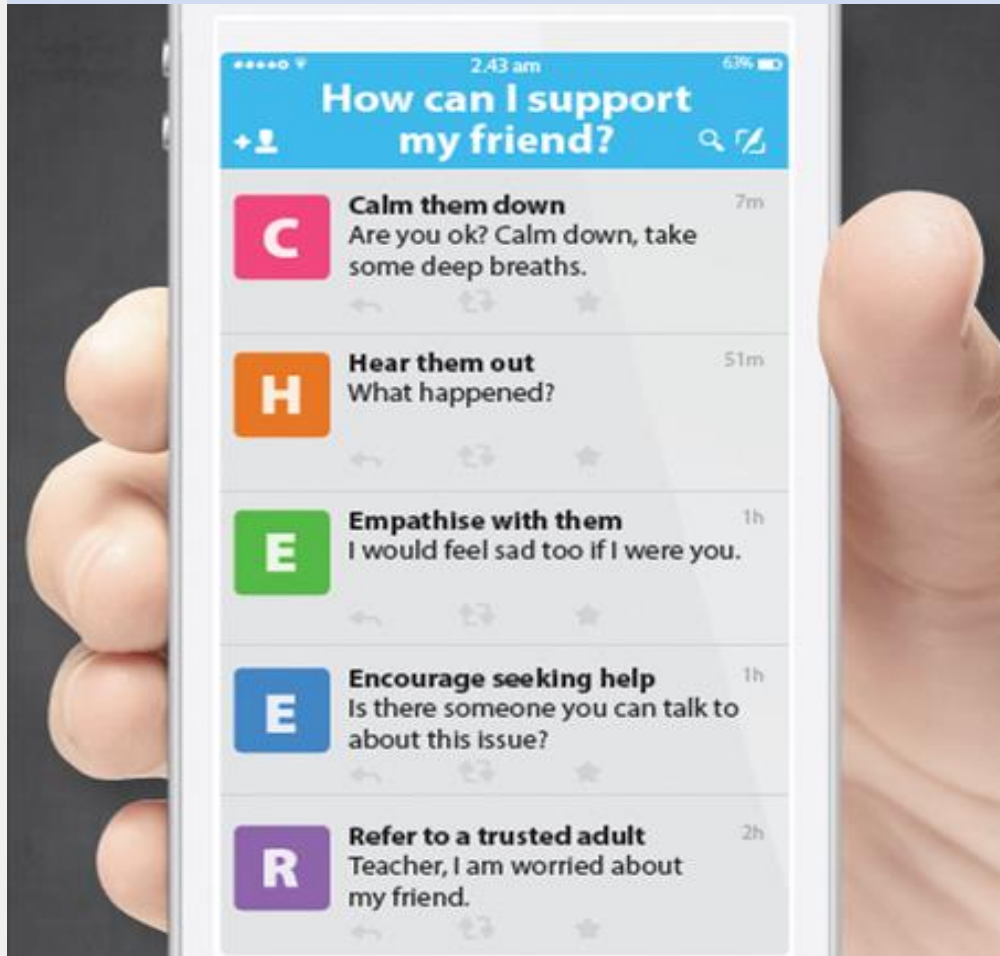
Realising the Star Within

SUPPORTING YOUR FRIEND

We may each experience different emotions upon receiving the results. You can share your friends' joy by congratulating them or give words of encouragement to friends who may be disappointed with their results.



Keep a lookout for your friends in distress. You can support them in the following ways:



There are other hotlines and chats available if you are more comfortable seeking help using these platforms. Scan the QR code below for a helpful resource.



SOS provides round-the-clock emotional support for those in distress, thinking of suicide or affected by suicide.

Call: **1767**
(24-hour helpline)

Whatsapp: **9151 1767**
(24-hour Care Text)

Community Health Assessment Team (CHAT) provides personalised and confidential mental health checks and consultation for youths. To speak with a youth support worker, you can:

Visit: **CHAT Hub at *SCAPE, #05-05**
Call: **6493 6500/ 6501**
Email: **CHAT@mentalhealth.sg**

mindline.sg is an online platform that provides tools, tips and resources to help you manage your health and well-being. Find out more at:
www.mindline.sg



TOUCHline is a helpline to provide youths with emotional support and practical advice.

Call: **1800-377 2252**
Monday- Friday (Excluding Public Holidays):
9am – 6pm

Carey is an online platform by Care Corner that provides free mental health check-ins with mental health professionals. Find out more at:
<https://carey.carecorner.org.sg/>

ec2 is an e-Counselling Centre where you can talk to a trained counsellor about the issues you are facing, right where you are.

Chat with a counsellor at:
www.ec2.sg
Monday – Friday (Excluding Public Holidays):
10am – 12pm & 2pm – 5pm



**The N-Level
examination is not
the destination.**

**It is part of your
education journey.**

JOINT INTAKE EXERCISE

Applications Briefing

YOU WILL BE COLLECTING 5 DOCUMENTS TODAY

1. Results Slip
2. N level Certificate
3. JIE Form N
4. ITE's Admission and Course Information brochure
5. 'What's Next' pamphlet

Applying to	How?	Timeline	What to Expect
ITE	Submit application online via the ITE application portal (https://www.ite.edu.sg/apply-for-ITE-courses)	from 2.30 pm on 18 Dec 2025 (today!) to 5 pm on 22 Dec 2025 (next Monday)	Posting results released at 9 am on 26 Dec 2025 (next Friday) , via the ITE application portal. Log on to the ITE application portal between 9 am on 26 Dec 2025 and 11.59 pm on 2 Jan 2026 to accept or reject the offer .
DPP	Candidates eligible for the DPP will receive a copy of Form N from their secondary schools Submit application online via the ITE application portal	from 2.30 pm on 18 Dec 2025 (today!) to 5 pm on 22 Dec 2025 (next Monday)	Posting results will be released at 9 am on 26 Dec 2025 (next Friday) , via the ITE application portal. Log on to the ITE application portal between 9 am on 26 Dec 2025 and 11.59 pm on 2 Jan 2026 to accept or reject the DPP offer . <u>School candidates who do not have a confirmed place in the DPP should report to their secondary school on 2 Jan 2026 for Secondary 5</u>
PFP	<u>Candidates interested in applying for the PFP should first report to school in 2026 to start their Secondary 5 year.</u> Applications for the PFP will open in January 2026, on day of O-Level results release. Candidates eligible for the PFP will receive a copy of Form P on the same day, inviting them to apply for the PFP		

RESOURCES

For more information on the DPP and the PFP, please visit these websites:

- Direct-Entry-Scheme to Polytechnic Programme (DPP)
(www.ite.edu.sg/secondary-school-students/admissions/entry-qualifications/gce-n-level/for-gce-n-students-jie-h)
- Polytechnic Foundation Programme (PFP)
(pfp.polytechnic.edu.sg/PFP/index.html)

